

Laboratorium voor Aquacultuur en Artemia Referentie Center Laboratoire d'Aquaculture et Centre de Référence Artemia

Live food applications

Artemia

- Biodiversity
- Genomics
- Pond production

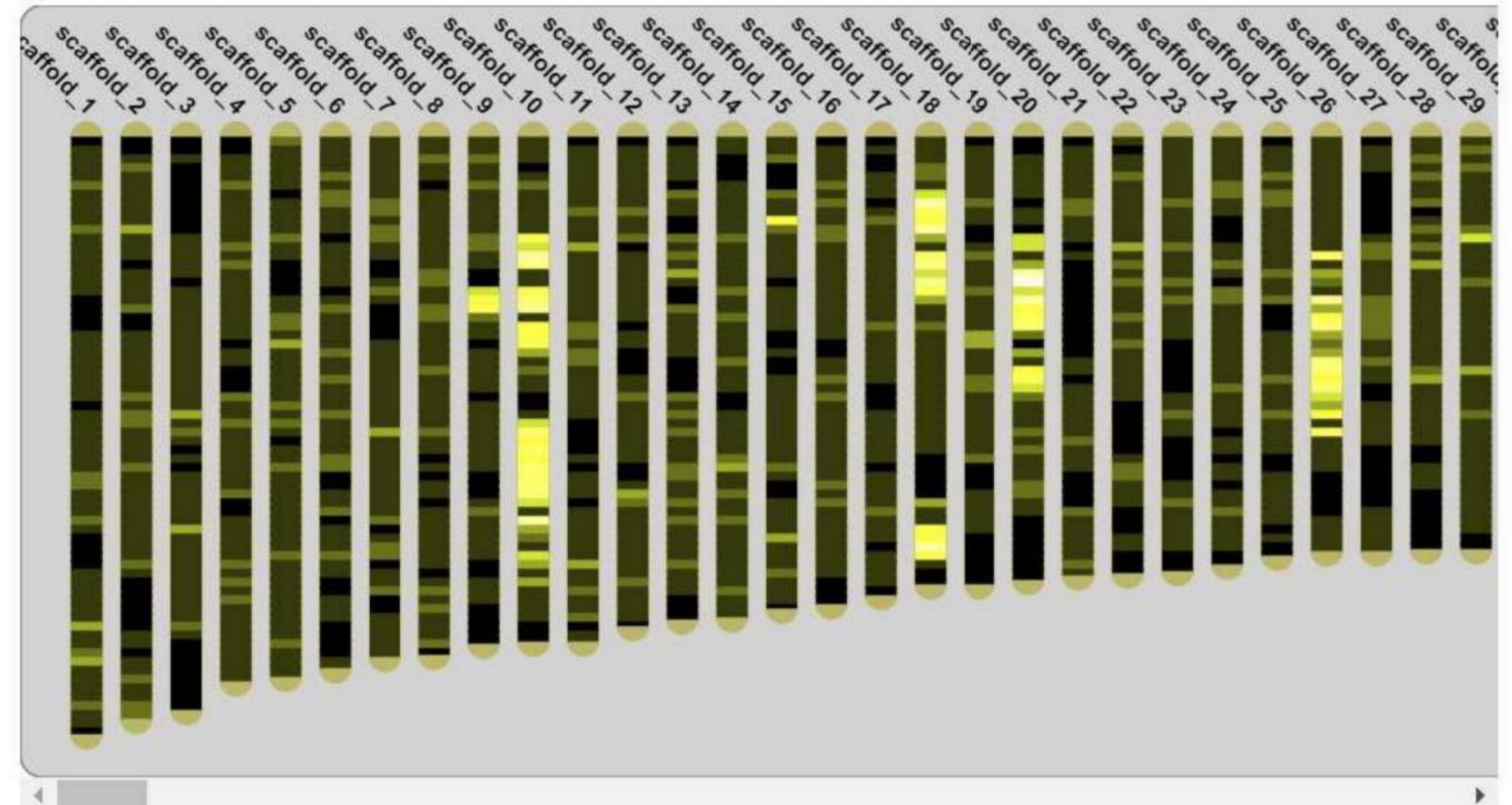
Microalgae

Rotifers



Browse

The brighter the color, the higher the gene-density in that region. Click on a region to go to that location in the browser. Only contigs larger than 10Kb are displayed here, the complete list of contigs is available in the dropdown menu from the genome browser.



Artemia genome sequencing in collaboration with VIB (available on ORCAE)



LUMINESCENT AQUATIC PATHOGENS: *VIBRIO*

Some pathogenic *Vibrio* strains produce light upon infection of aquatic organisms



Microbial management

Host-microbe interactions

- Bioflocs
- Immune priming
- Luminescence

Gnotobiotic models

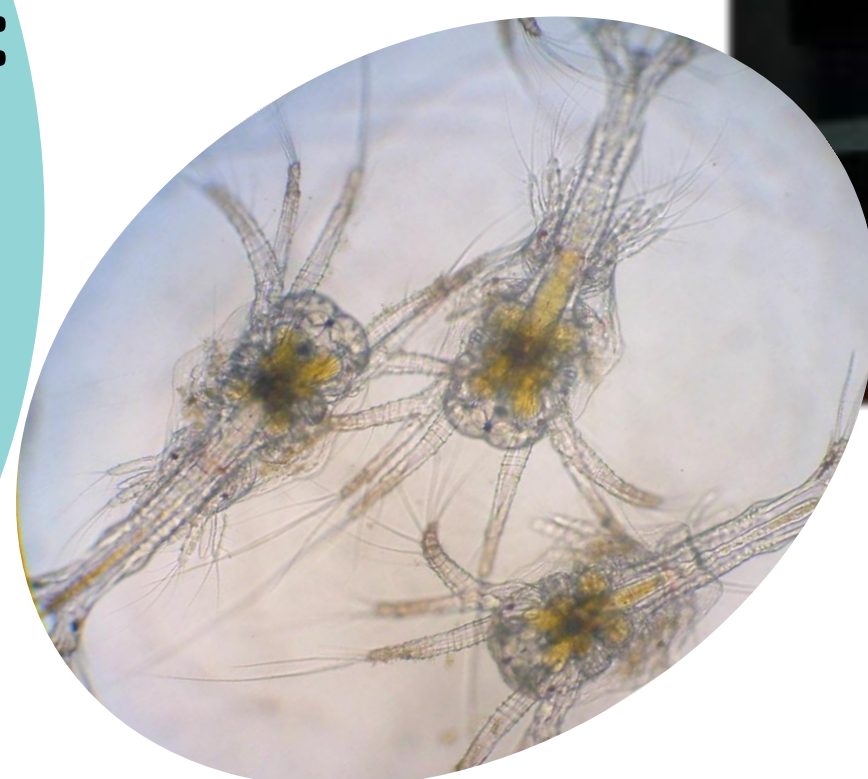
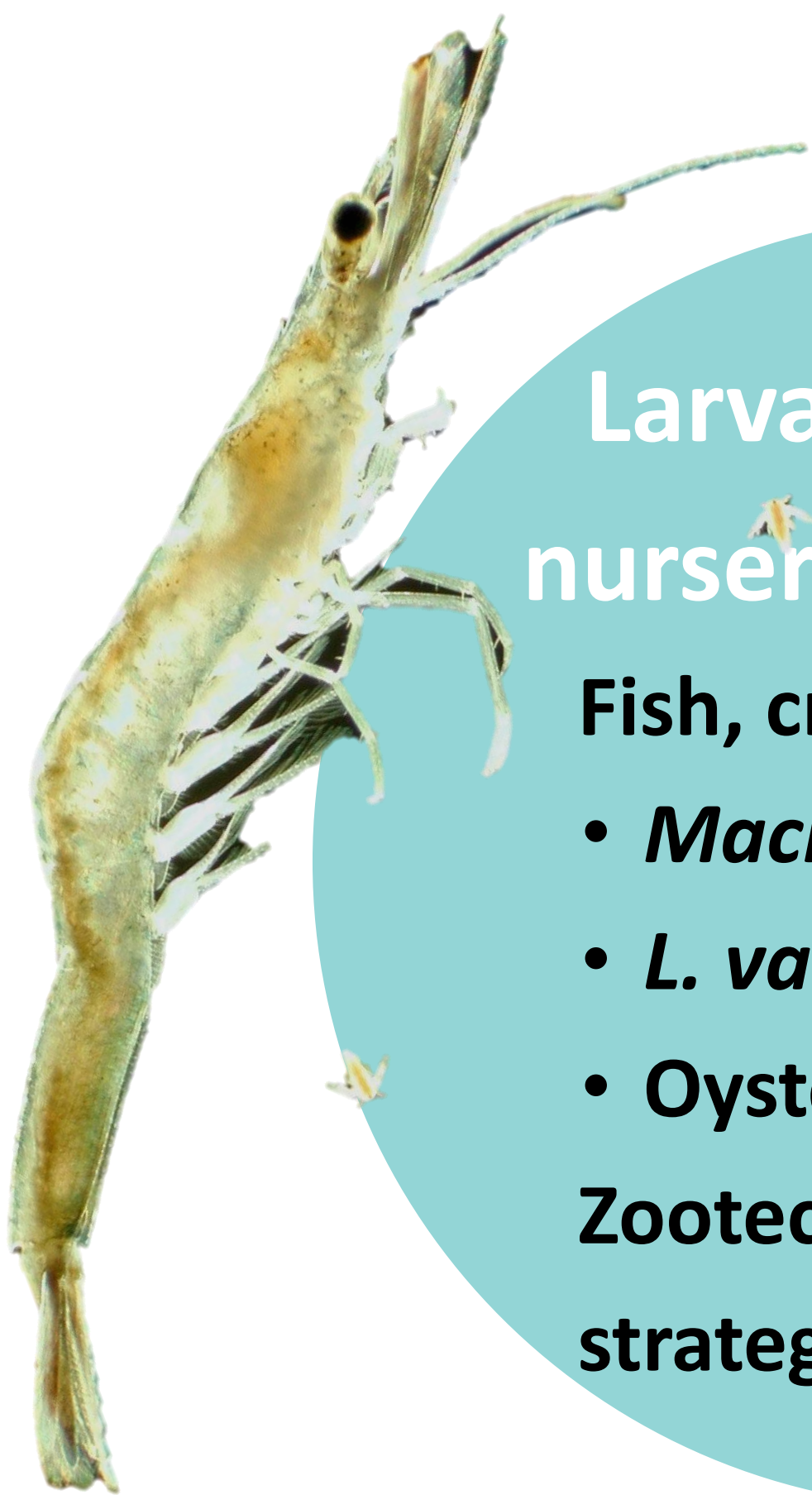
- *Artemia*
- European seabass larvae

Larval rearing & nursery techniques

Fish, crustaceans, molluscs:

- *Macrobrachium*
- *L. vannamei*
- *Oyster spp.*

Zootechniques, feeding strategies, disease control



Multi-use of marine space for extractive aquaculture and energy production



©mennomulder.com

